

SEPTLA 2010

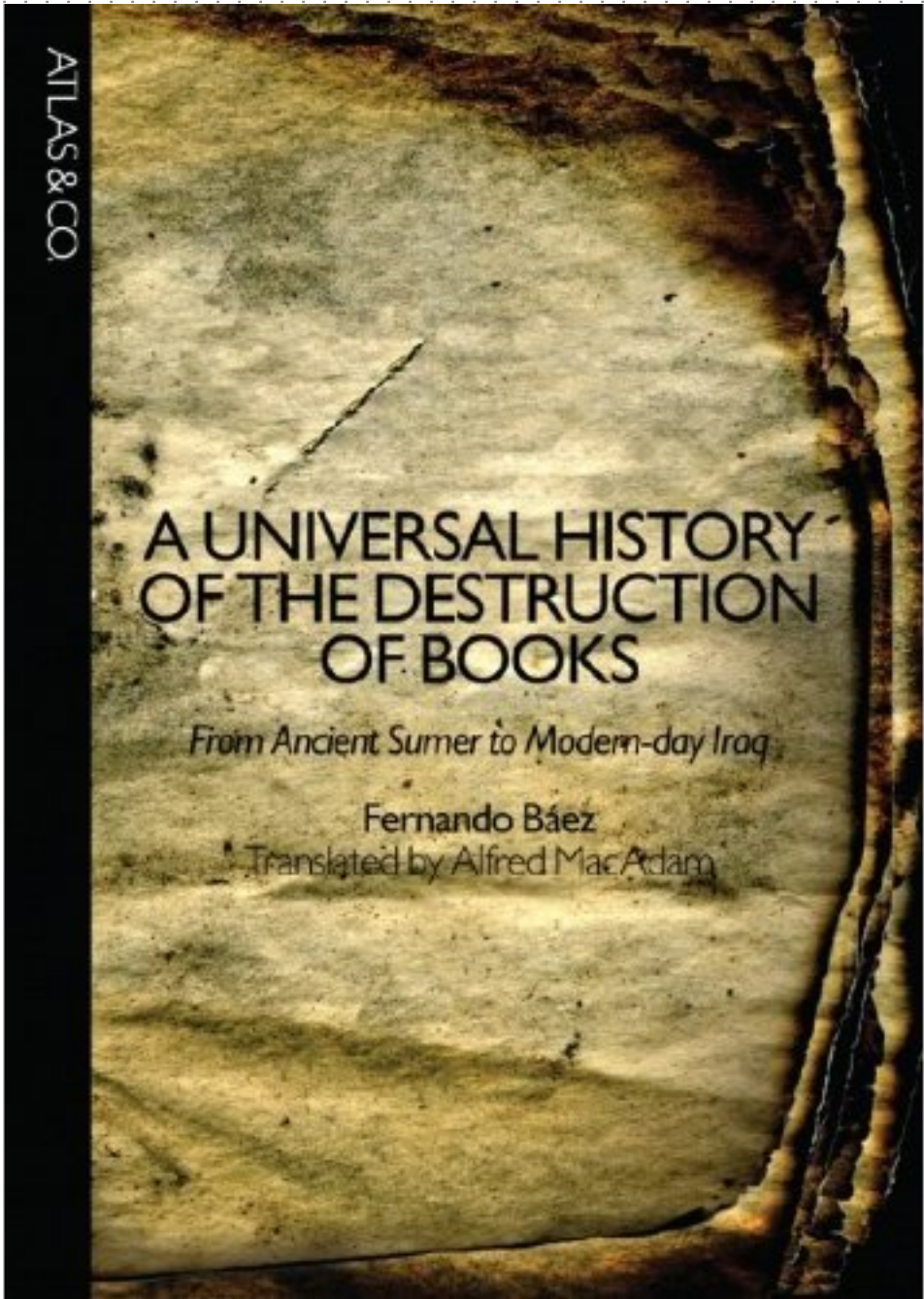
THE FUTURE OF THEOLOGICAL LIBRARIANSHIP

(and Your Part in It)

SEPTLA 2010

Introduction

- Return
- Background
- Different cultures,
equilibriums, pretensions ..
- **Whose** future?
- Perspective



SEPTLA 2010

examples

SEPTLA 2010

OUR EXPECTATIONS, FOR

- Permanence
- Longevity
- Sustainability
- Continuity

→ May be *naive* or *unrealistic*

SEPTLA 2010

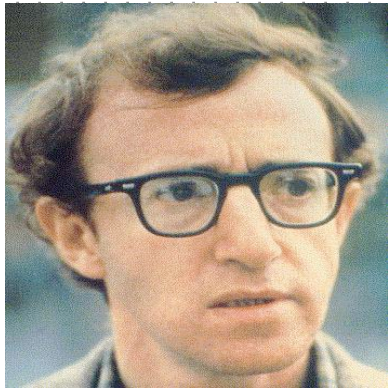
What is there about the challenges of today that makes them particularly **unique** or **daunting**?

SEPTLA 2010

2005 – ATLA Conference, Austin

1. Publishing
2. Our academic culture, and the relationship of theological education to the life of the church
3. The changing nature of research

SEPTLA 2010



"Today we are at a crossroads. One road leads to hopelessness and despair; the other, to total extinction. Let us pray we choose wisely."
(Woody Allen)

SEPTLA 2010

2009 – ATLA Conference, St. Louis

1. The difference between the symbolic and functional priorities in collections.
2. The rescaling of libraries and collections:
3. Governance
4. A growing disdain for euphemism
5. Openness to new collaborations
6. Stronger relationships with publishers
7. Contours of how and where theological discussion takes place and how such discourse it gets published

SEPTLA 2010

A. General Trends

- ✓ Economy (ATS info)
- ✓ Changes in technology
- ✓ Examples →

SEPTLA 2010

A. General Trends/TECHNOLOGY

B. Horizon Report

- ✓ Collections → network → unique value
- ✓ People expect to be able to work, learn, and study whenever and wherever they want to
- ✓ Technologies increasingly cloud-based; implications for IT support
- ✓ Students increasingly collaborative by nature, demise of subject silos

SEPTLA 2010

2010 – SEPTLA

A. General Trends/TECHNOLOGY

e.g. Lorcan Dempsey

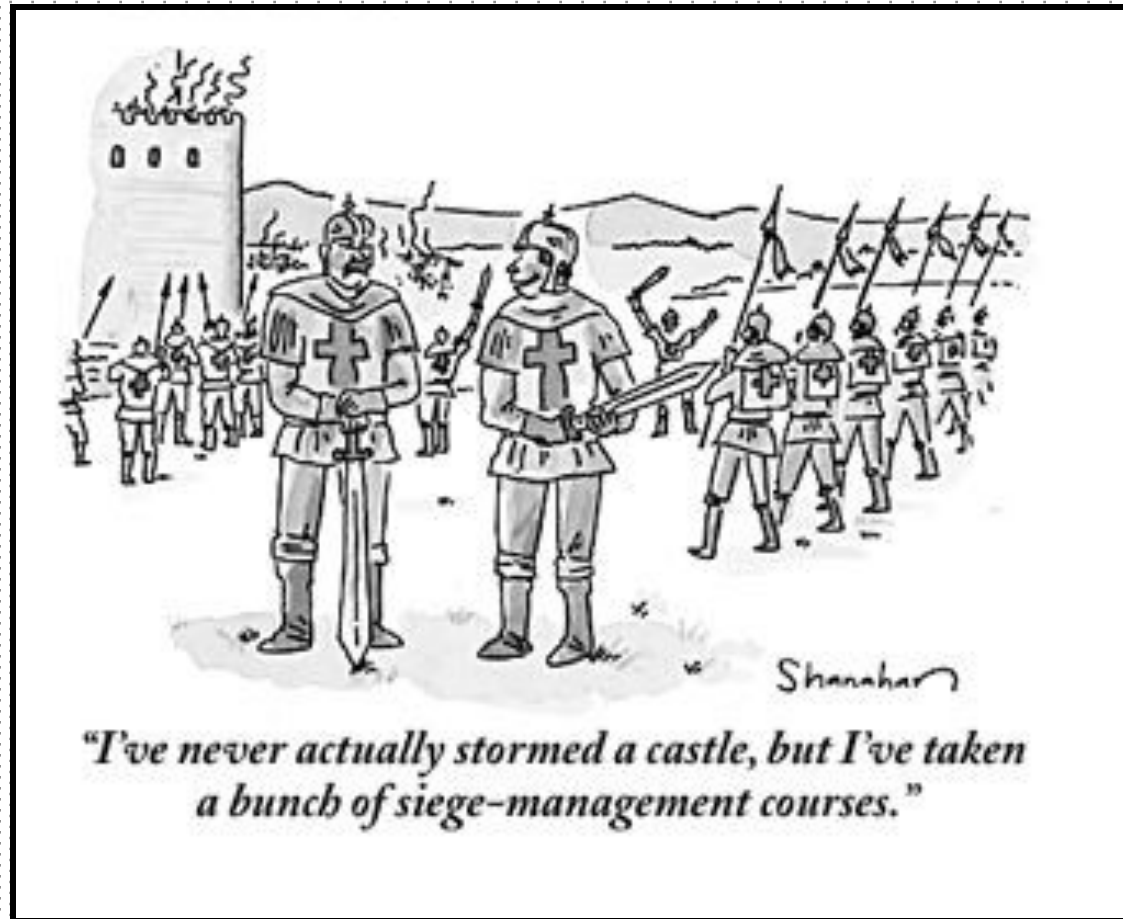
- ✓ “Always On: Libraries in a World of Permanent Connectivity”

<http://orweblog.oclc.org/archives/001849.html>

2010 – SEPTLA

B. Specific Trends and Factors

1. Institutional Identity & Pretensions
 - Confident or anxious?
 - Affirm or let go of traditional commitments?
2. Sustainability of M.Div/rise of other models?
3. Capacity for vocational reflection and innovation
 - What do the cultures and communities we serve ***need us to excel at?***
4. Change in structures of work



"I've never actually stormed a castle, but I've taken a bunch of siege-management courses."

What we **know already**, and what we are **capable of learning**?



The cure for boredom is curiosity; there is no
cure for curiosity.

(Attributed to Dorothy Parker)

SEPTLA 2010

- IMPORTANCE OF EXPECTATIONS:
 - What others expect of us
 - students, faculty, admin, extended comm'ty
 - Accurate? Appropriate?
 - Realistic?
 - difficult or easy to meet?

→ COMMENTS?

SEPTLA 2010

- IMPORTANCE OF EXPECTATIONS, CONT'D
 - What we *expect of ourselves*
 - Adjustable?
 - Appropriate?
 - Equilibrium between capacity and objectives?
 - Examples:
 - Modes of reference service
 - Managing email: how did we do that before?

→ COMMENTS?

SEPTLA 2010

- IMPORTANCE OF EXPECTATIONS,
CONT'D

- role of *leadership* in determining what a library expects of itself
- Example
- How do expectations get adjusted, and by whom?
- the “curse” of “more with less” thinking

→ COMMENTS?

SEPTLA 2010



- Holland House, London – September 1940
- how have expectations shifted from previous day
- what are critical objectives on a day like this?
- where are the librarians?
- context of *disruption* rather than *stability*

SEPTLA 2010

Future of Theological Librarianship – final comments

- importance of CONTEXT
(both a “global” and a local question)
- equilibrium: opportunity and agility

QUESTIONS?